



Food Assistance



Franklin County

Ministerial Alliance

Benton Township

Goode Township

Frank. Co. Food Pantry

Salvation Army

First Baptist Church

Telephone

1-618-932-2806

1-618-439-3181

1-618-625-2581

1-618-932-8000

1-618-937-4111

1-618-932-2105

Area Served

West Frankfort

Benton

Sesser

Franklin County

Franklin County

West Frankfort

Jackson County

Jackson Co. Food Pantry

Lakeland Church

First Baptist

Elkville Christian

Church of Nazarene

Elm Street Baptist

Adolescent Health Center

Bread of Life

1-618-687-1769

1-618-529-1715

1-618-867-2477

1-618-568-1544

1-618-684-2624

1-618-687-6368

1-618-529-2621

1-618-529-1715

Murphysboro

Jackson County

Desoto

Elkville Area

Jackson County

Carbondale

Jackson County

Jefferson County

Prince of Peace

The Salvation Army

West Side Baptist

Park Avenue Baptist

Pleasant Hill Baptist

Angels On Assignment

1-618-242-5143

1-618-244-7135

1-618-244-3954

1-618-242-1882

1-618-266-7247

1-618-242-1030

Jefferson County

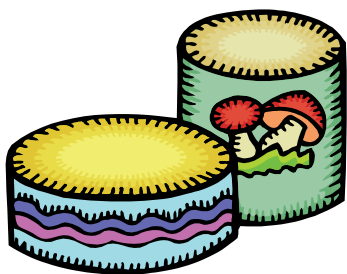
Jefferson County

Mt. Vernon

Mt. Vernon

Mt. Vernon

Jefferson County



Food Assistance



<u>Saline County</u>	<u>Telephone</u>	<u>Area Served</u>
Choisser Community	1-618-273-8206	Eldorado
First United Methodist	1-618-252-7023	Saline County
Saline Baptist	1-618-252-2374	Saline County
Salvation Army	1-800-993-5854	Saline County
Ministerial Alliance	1-618-273-7382	Saline County
Anna Bixby	1-618-252-8389	Saline County
<u>Williamson County</u>		
Salvation Army	1-618-993-5854	Williamson County
Herrin Community	1-618-942-2080	Herrin Area
Hurst Food Pantry	1-618-987-2114	Hurst Area
First United Methodist	1-618-983-5150	Johnson City
Ministerial Alliance	1-618-993-8419	Marion
Community United	1-618-985-3171	Cambria
Commodities	1-618-985-2800	Carterville
<u>Perry County</u>		
Duquoin Food Pantry	1-618-571-2527	Duquoin Area
Ministerial Alliance	1-618-496-3020	Perry County
Second Baptist Church	1-618-542-2906	Perry County
<u>Union County</u>		
First Baptist Church	1-618-833-5416	Anna Area
Bethany Village	1-618-833-1777	Union County
First Baptist Church	1-618-658-3741	Vienna

DHS

Department of Human Services

Offices in Southern Illinois

<u>County Office</u>	<u>Telephone</u>
Alexander County	1-618-734-0762
Bond County	1-618-664-0668
Clay County	1-618-665-3391
Franklin County	1-618-439-4351
Gallatin County	1-618-253-7161
Pulaski County	1-618-745-9411
Saline County	1-618-253-7161
Pope County	1-618-683-2921
Jackson County	1-618-687-1705
Jefferson County	1-618-242-1040
Union County	1-618-833-2118
Marion County	1-618-532-1966
Massac County	1-618-524-2631
Wabash County	1-618-262-5179
Williamson County	1-618-997-6591
Jackson County	1-618-687-1705
Randolph County	1-618-826-4559
Lawrence County	1-618-943-2334
Richland County	1-618-392-3151



Clothing/Reduced Priced Clothing



<u>Agency</u>	<u>Telephone</u>	<u>Location Served</u>
<u>Franklin County</u>		
Whittington Baptist Church	1-618-629-2423	Franklin County
First Baptist Church	1-618-724-9390	Franklin County
Goode Township	1-618-625-2851	Sesser
The Salvation Army	1-618-932-3990	Franklin County
<u>Jackson County</u>		
WDBX Community	1-618-529-8474	Jackson County
Church Women United	1-618-457-6976	Jackson County
<u>Jefferson County</u>		
The Salvation Army	1-618-244-7135	Jefferson County
<u>Saline County</u>		
First United Methodist	1-618-253-7023	Saline County
Saline Baptist Food Pantry	1-618-252-2374	Saline County
The Salvation Army	1-618-253-4421	Saline County
<u>Williamson County</u>		
Herrin Community	1-618-942-2080	Williamson County
The Salvation Army	1-618-993-5854	Williamson County
<u>Union County</u>		
Goreville Ministerial Alliance	1-618-995-9360	Union County
Bethany Village	1-618-833-1777	Union County
First Baptist Church	1-618-833-5416	Union County



Clothing/Reduced Priced Clothing



<u>Agency</u> <u>Serving All Counties</u>	<u>Telephone</u>	<u>Location</u> <u>Served</u>
Angels On Assignment	1-618-242-1030	All
Harvest Deliverance Center	1-618-252-0009	All
The Women's Center	1-618-529-2324	All
Goodwill	1-618-242-9582	All
Goodwill	1-618-457-5290	All
University Baptist Church	1-618-457-0323	All
Community United Pantry	1-618-985-3731	All
The Salvation Army	1-618-988-8892	All
Goodwill	1-618-998-1612	All

CASA

Court Appointed Special Advocates

CASA Of Franklin County

1-618-438-0608

CASA Of Jefferson County

1-618-204-5453

CASA Of Saline County

1-618-253-3355

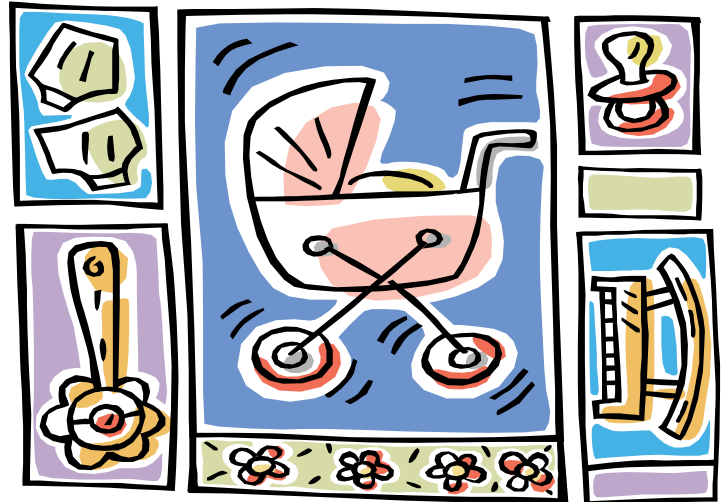
CASA Of Williamson County

1-618-998-2291





Pregnancy Matters In Southern Illinois



Jackson County

1-618-549-2794

Perry County

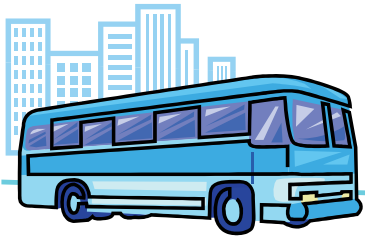
1-618-318-1187

Union County

1-618-833-7797

Williamson County

1-618-997-2790



Public Transportation



Alexander County

1-618-658-8380

Bond County

618-664-9844

Clinton County

618-542-4700

Franklin County

1-618-937-4544

Gallatin County

1-877-667-6119

Pope/Hardin County

1-877-667-6119

Jackson County

1-618-549-0304

Williamson County

1-618-993-1900

Jefferson County

1-618-242-0240

Saline County

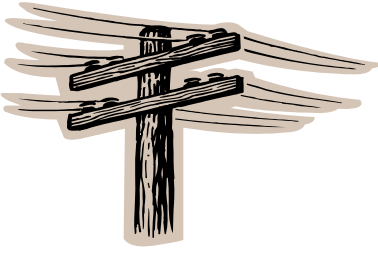
1-618-252-4662

Wayne County

1-618-847-4077

White County

1-877-667-6118



Financial Assistance Utilities & Rent

Franklin County

	<u>Telephone</u>	<u>Area Served</u>
Ministerial Alliance	1-618-932-2866	West Frankfort
First Baptist Church	1-618-932-2105	West Frankfort
Goode Township	1-618-625-2851	Goode and Barren

Jackson County

Murphysboro Township	1-618-684-6711	Murphysboro
Western Egyptian	1-618-684-8997	Jackson County

Jefferson County

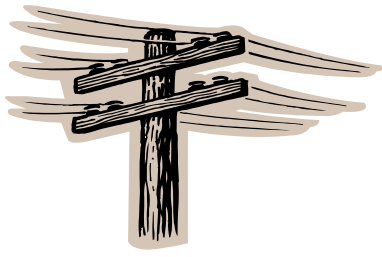
Salvation Army	1-618-244-7135	Jefferson County
Angels on Assignment	1-618-242-1030	Jefferson County

Saline County

First United Methodist	1-618-253-7023	Saline County
WADI	1-618-252-2680	Saline County

Williamson County

Salvation Army	1-618-993-5854	Williamson County
General Assistance	1-618-993-8156	Williamson County
Ministerial Alliance	1-618-993-8419	Marion



Financial Assistance Utilities & Rent

Franklin County

Crosswalk

Telephone

1-618-937-3581

Edwards County

WADI

1-618-445-2379

Gallatin County

WADI

1-618-269-3489

Hamilton County

WADI

1-618-643-2161

Wabash County

WADI

1-618-262-4151

Wayne County

WADI

1-618-842-2962

White County

WADI

1-618-384-5541

Monroe County

Western Egyptian

1-618-939-8715

Perry & Randolph

Western Egyptian

1-618-443-5231



DCFS Offices in Southern Illinois



Crawford County

Edwards County

Wabash County

1-618-393-2979

Randolph County

Monroe County

Jackson County

Perry County

1-618-443-4317

White County

Saline County

Gallatin County

1-618-253-7604

Williamson County

Franklin County

1-618-993-8639

Massac County

Johnson County

Pope County

Hardin County

1-618-524-2428

Union County

1-618-833-4449

Marion County

1-618-548-7300

Jefferson County

1-618-244-8400

Alexander County

Pulaski County

1-618-734-0858

Clinton County

Washington County

Bond County

1-618-594-4541

Madison County

1-618-876-8985

Effingham Covers the following
Counties

Edwards County

Effingham County

Fayette County

Marion County

Jasper County

Monroe County

Clay County

Wayne County

1-217-347-5561



Dental & Medical Assistance



Alexander County

Cairo Mega Center

Telephone

1-618-734-4400

Area Served

Alexander & Pulaski

Daystar Care Center

1-618-734-1700

Alexander

Bond County

Bond County Health Dept.

1-618-664-1442

Bond County

Clay County

Clay County Hospital

1-618-662-2191

Clay County

Edwards County

Edwards County Health Offices

1-618-445-2615

Edwards County

Franklin County

Crosswalk

1-618-937-3581

Serves all but Saline

Hands of Hope

1-618-998-8282

Williamson and Franklin

Shawnee Health Services

1-618-985-4841

All but Jefferson

Christopher Rural Health Clinic

1-618-273-2360

All

Gallatin County

Ferrell Hospital

1-618-272-7132

Gallatin County

Jackson County

Abundant Health Clinic

1-618-529-9459

Jackson County

Create a Smile

1-618-985-4964

Jackson and Williamson

Rural Health

1-618-833-4471

Jackson County

Shawnee Health

1-618-684-2321

Jackson County



Dental & Medical Assistance



Jefferson County

Crosswalk

Jefferson County Health Dept.

Telephone

1-618-937-3581

1-618-244-7134

Area Served

All but Saline

Jefferson County

Perry County

Perry County Medical Center

1-618-357-5371

Perry County

Pulaski County

CHESI

1-618-342-6767

All

Saline County

Bridge Medical Center

1-618-294-8330

Saline

Shawnee Health Services

1-618-985-4841

All but Jefferson

Wabash County

Wabash County Medical Center

1-618-263-3873

Wabash and Richland

Williamson County

Create a Smile

1-618-985-4964

Jackson and Williamson

Crosswalk

1-618-937-3581

All but Saline

Hands of Hope

1-618-998-8282

Williamson and Franklin

Shawnee Health Service

1-618-985-4841

All but Jefferson

SIUC Dental Center

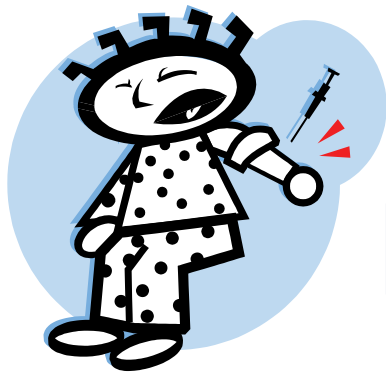
1-618-453-2353

All

TLC of Southern Illinois

1-618-985-2181

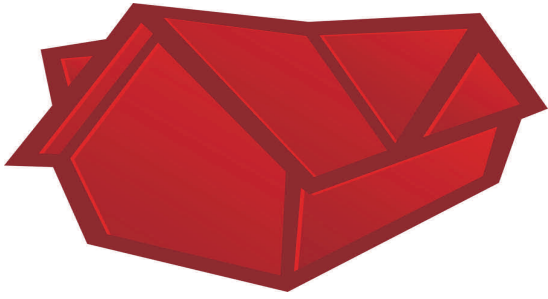
All



Southern Illinois Health Departments



<u>Telephone</u>	
1-618-662-4406	<u>Clay County</u>
1618-993-8111	<u>Williamson County</u>
1-618-439-0951	<u>Franklin County</u>
1-618-684-3143	<u>Jackson County</u>
1-618-392-6241	<u>Richland County</u>
1-618-548-3878	<u>Marion County</u>
1-618-943-3302	<u>Lawrence County</u>
1-618-826-5007	<u>Randolph & Monroe County</u>
1-618-357-5371	<u>Perry County</u>
1-618-643-3522	<u>Hamilton County</u>
1-618-273-3326	<u>Saline County</u>
1-618-842-5166	<u>Wayne County</u>
1-618-594-2723	<u>Clinton County</u>
1-618-664-1442	<u>Bond County</u>
1-618-544-8798	<u>Crawford County</u>
1-618-263-3873	<u>Wabash County</u>
1-618-445-2615	<u>Edwards County</u>
1-618-244-7134	<u>Jefferson County</u>
	<u>Southern Seven Health</u>
1-618-634-2297	<u>Department Covers</u>
	<u>Pulaski, Alexander, Hardin</u>
1-618-634-2297	<u>Johnson, Massac, Pope</u>
	<u>And Union Counties</u>



Southern Illinois Housing Authorities

	<u>Telephone</u>
Franklin County	1-618-932-2124
Williamson County	1-618-985-2422
Housing Authority of Marion	1-618-997-1258
Jackson County	1-618-681-3183
Union County	1618-833-5129
Jefferson County	1-618-244-5910
Wayne County	1-618-842-9008
Perry County	1-618-542-5666
Pope County	1-618-683-4791
Randolph County	1-618-826-4314
Massac County	1-618-524-8411
Saline County	1-618-252-6381
Hardin County	1-618-287-2786
Marion County	1-618-532-1894
Lawrence County	1-618-943-4762
Richland County	1-618-395-1978
Edwards County	1-618-445-2715
Washington County	1-618-327-4800
Wabash County	1-618-262-5518



Homeless Shelters In Southern Illinois



Lighthouse Shelter

1-618-993-8180

Herrin Family Crisis Center

1-618-988-8020

Good Samaritan House

1-618-457-5794

4 C's Shelter

1-618-252-3931

Life Boat Alliance

1-618-244-4088



Regional Offices of Education



Jefferson County Regional Office of Education #25

1-618-244-8040

Mt Vernon Regional Office of Education #80

1-618-244-8080

Regional Office of Education #2 in Ullin

1-618-634-2516

Regional Office of Education #3 Vandalia

1-618-283-9311

Regional Office of Education #2 Jonesboro

1-618-634-2292

Regional Office of Education #30 Murphysboro

1-618-687-7290

Regional Office of Education #13 Salem

1-618-534-3885

Regional Office of Education #21 Marion

1-618-922-3307

Regional Office of Education #45 Waterloo

1-618-939-5650 X112

Regional Office of Education #12 Robinson

1-618-544-2719



Community Support Agencies



Williamson County

Telephone

Red Cross	1-618-988-1147
Child Advocacy Center	1-618-942-3800
DCFS	1-618-993-8639
H-Group	1-618-997-5336
Marion Walk-in Clinic	1-618-993-1400
Hospice	1-618-997-3030
General Assistance	1-618-993-8156
Lutheran Social Services	1-618-997-9196
Shawnee Alliance for Seniors	1-618-985-8832
Salvation Army	1-618-993-5854
Unemployment Office	1-618-942-7367
VA Medical Center	1-618-997-5311
Women's Center	1-618-997-0949
WIC	1-618-993-9180
Herrin Hospital	1-618-942-2171
Marion Ministerial Alliance	1-618-993-8419
Southern Illinois Coalition for Homeless	1-618-993-0094



Community Support Agencies



Jackson County

Red Cross
Archway
Jackson County Habitat
Behavioral Health Services
Carbondale Healthcare
Catholic Social Services
Gateway Youth Center
Carbondale Township
Illinois Migrant Council
Jackson County Senior Citizens
Memorial Hospital
Operation Rebound
SIUC Head Start
SI Center for Independent Living
SI Regional Social Services
St. Josephs Hospital
START
Unemployment Office
TIP Health Services
Western Egyptian
Women's Center

Telephone

1-618-529-2157
1-618-549-4442
1-618-457-8480
1-618-457-3591
1-618-529-5358
1-618-351-0743
1-618-529-1151
1-618-457-3366
1-618-457-6727
1-618-457-4157
1-618-549-0721
1-618-549-8232
1-618-453-6448
1-618-457-3318
1-618-457-6703
1-618-684-3156
1-618-687-2378
1-618-687-2341
1-800-562-4847
1-618-965-3193
1-618-549-4807



Community Support Agencies



Franklin County

Crosswalk

1-618-937-3581

General Assistance

1-618-993-8158

Saline County

Anna Bixby Women's Center

1-618-252-8380

DCFS

1-618-253-7604

Egyptian Mental Health

1-618-273-3326

Family Planning

1-618-273-3827

General Assistance (Eldorado)

1-618-273-7831

General Assistance (Harrisburg)

1-618-252-8363

Head Start

1-618-252-6906

Lutheran Social Services

1-618-252-7361

Salvation Army

1-618-273-3707

Social Security

1-618-253-7685

WADI

1-618-252-2680

Union County

Choate Mental Health

1-618-833-5161

DCFS

1-618-833-4449

Fellowship House

1-618-833-4456

Bethany House

1-618-833-1777

Alexander County

Delta Center

1-618-734-3626

Cairo Women's Center

1-618-734-4357

Southern Seven Health Department

1-618-634-2297



Community Support Agencies



Perry County

Marshall Browning Hospital
Lutheran Social Services
Little Disciple Ministries
Perry County Child Advocacy Center

Telephone

1-618-542-2146
1-618-542-4578
1-618-542-2477
1-618-357-2990

Massac County

Mental Health
DCFS

1-618-524-2428
1-618-542-2428

Jefferson County

Advance Behavioral Health
Catholic Social Services
DCFS
Good Samaritan Hospital
Comprehensive Services
Lutheran Child and Family Services

1-618-242-9226
1-618-244-0344
1-618-242-6556
1-618-244-4600
1-618-242-1510
1-618-242-3284

Clinton County

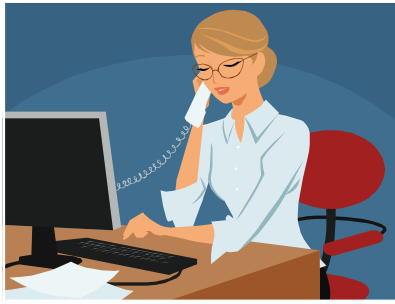
BCMw
St. Mary's Hospital
Addus Healthcare

1-618-532-7388
1-618-532-6731
1-618-532-3988

Pope County

Family Counseling
Public Assistance

1-618-683-4791
1-618-2921



Community Support Agencies



Telephone

<u>Randolph County</u>	
Catholic Social Services	1-618-277-9200
Chester Head Start	1-618-826-5651
Chester Mental Health	1-618-826-4571
Chester Senior Center	1-618-826-5108
DCFS	1-618-433-4317
IL Coalition for Community Service	1-618-628-0143
IL Department of Veteran's Affairs	1-618-233-5740
LCFS	1-618-443-2228
Memorial Hospital	1-618-826-4581
Chester Nursing Home	1-618-443-4351
Employment Office	1-618-826-4709
Red Bud Senior Center	1-618-282-6333
Salvation Army of Chester	1-618-826-2549
Salvation Army of Steelville	1-618-772-2177
Sparta Hospital	1-618-443-2177
Western Egyptian Economic Opp.	1-618-965-3193
Women's Crisis Center of Chester	1-618-826-4314